



# 137<sup>th</sup> National Skirmish

May 16-20, 2018 Fort Shenandoah

004-NW Huron Rangers \* 024-NW 111<sup>th</sup> Ohio Volunteer Inf. \* 027-CV 1<sup>st</sup> Virginia Cavalry Regt. \* 032-NW 24<sup>th</sup> Michigan Volunteer Infantry \* 049-NW 15<sup>th</sup> Regt Virginia Vol. Cavalry \* 079-CV 1<sup>st</sup> Valley Rangers \* 081-MA 3<sup>rd</sup> U.S. Regular Inf. \* 091-CV 5<sup>th</sup> Virginia Vol. Cavalry \* 098-NE 1<sup>st</sup> New York Dragoons \* 125-NE 8<sup>th</sup> New York Heavy Artillery \* 146-TW York Rangers, \* 190-MA 69<sup>th</sup> New York State Volunteers \* 202-TW 7<sup>th</sup> North Carolina Vol. \* 237-TW 3<sup>rd</sup> North Carolina Cavalry \* 264-CV Berdan's 1<sup>st</sup> US Sharpshooters \* 265-MA Durrell's Indpt. Battery

**Skirmish Director: Robert Hannula, 1<sup>st</sup> Valley Rangers**

## Small Arms Committee (SAC) Inspections

Hocker-Hughes Building -IG Office

Wed, Thurs. & Friday mornings only – 9:00 – 11:00 a.m.

## Executive Secretary Office Hours

Wed. 1:00-3:30 Thurs, Fri. & Sat. 8:30-2:30 Sunday 8:30 - 9:30

## SCHEDULE OF EVENTS

### Tuesday, May 15, 2018

Noon – 6:00 Registration opens for target and pass pickup

### Wednesday, May 16, 2018

*Registration will be open 24hr/day Wed. & Thurs.*

7:00 Registration office open for target and pass pickup

8:15 Safety Lecture for host staff -Main Tower Required for line judges and stat house host staff

8:30-9:00 Set up ranges for individual matches

9:00-5:00 Main range & revolver range open for individuals

### Thursday, May 17, 2018

7:30-8:00 Set up ranges for individual matches

8:00-5:00 Main range & revolver range open for individuals

4:00 -6:00 Artillery inspections – 3<sup>rd</sup> US Regular campsite

5:30 Demonstration Match: Single Shot Pistol –Revolver Range

### Thursday, May 17, 2018 Non-Shooting Events

1:00 p.m. “Doc” Chambers Memorial Golf Outing

6:00 p.m. SCV/UDC Meeting/Reception

### Friday, May 18, 2018

6:00 a.m. –Midnight Registration open

7:30-8:00 Set up main range for individual matches and set up revolver range for company matches

8:00-10:00 Artillery inspections – 3<sup>rd</sup> US Regular Campsite

8:00-11:00 Main range open for individual matches

8:00-9:15 Phase I Revolver company match (double hang all phases)

9:15-10:30 Phase II Revolver company match

10:15 Artillery meeting for all cannon & mortar crews, in barn

10:30-1:30 Resume Revolver individual matches on revolver range

11:00-11:30 Set up main range for smoothbore match

11:30-1:00 Smoothbore company matches -2 relays

1:15-1:45 Set up main range for Breechloader, Spencer & Single Shot matches

1:45-2:45 Breechloader, Spencer & Single Shot matches all 1-relay

3:00-5:00 BB Issue Air Rifles & Safety Glasses SAC Office

2:45-4:00 Setup & conduct Smoothbore Howitzer Match

3:00-5:00 Conduct BB Gun individual matches –Revolver Range

4:00-4:30 Set up Mortar Match

4:30-5:30 Mortar Match

### Friday, May 18, 2018 Non-Shooting Events

6:00-7:00 p.m. AA meeting Historical Center –Lower Level

7:30 p.m. **Membership Meeting in the barn. All units must be represented.**

8:00 –9:00 p.m. History Committee Speaker Series – Historic Center, lower level

8:30 p.m. Irish Music Jam – Ruritan Pavilion

### Saturday, May 19, 2018

6:00 a.m. –Midnight Registration open

7:00-10:00 BB Issue Air Rifles & Safety Glasses SAC Office  
7:30 -11:00 Stat Office open for individual competition protests  
7:30-11:00 Set up revolver range and conduct BB Gun Individual matches Last relay 10:30  
11:00-11:45 BB Gun Protests – Small Arms Building  
8:00-11:00 Artillery inspections - 3<sup>rd</sup> US Regular campsite  
8:00-8:30 Set up main range for Carbine company matches  
8:30-12:00 Carbine Company matches on main range  
12:30-1:00 Set up main range for Artillery matches  
1:00-5:00 Artillery Matches  
1:15-4:00 Setup on main range and conduct BB gun matches (Positions 55-67)  
3:00 Protest closed for completed company matches  
3:30-5:00 Individual awards available for pickup at the Stat house  
(approx)  
5:30-6:00 Awards ceremony in Memorial Park for BB Gun matches  
6:00 Awards ceremony in Memorial Park for Smoothbore, Mortar, Carbine, Revolver, Breechloader, Single Shot, DSSA/DSCA, 50-Year Awards

### Saturday, May 19, 2018 Non-Shooting Events

4:00-7:00 p.m. Gainesboro Fire Hall – Roast Beef & Ham Dinner

6:00 p.m. Catholic Worship – Historic Center, lower level

7:00 p.m. Protestant Worship – Historic Center, lower level

9:00 -12:00 DJ music & dancing in the Barn

### Sunday, May 20, 2018

6:00 a.m. Registration opens

7:30-8:00 Set up main range for Phase I Musket company matches

7:30 -9:30 Stat Office open for Artillery competition protests

8:00 Opening Ceremonies for Phase I; Musket company matches immediately follow

11:30-12:00 Clean up & set up main range for Phase II Musket company matches

12:00 Opening Ceremonies for Phase II; Musket company matches immediately follow

3:00 approx. Protests close ½ hour after final musket match results are posted.

4:00 Final clean up of ranges

*Awards Ceremony in Memorial Park as soon as possible following end of Phase II matches (Artillery awards will be presented at this time)*

### Costume Committee Events

Friday, May 18, 2018 1:00-3:00 Presentation - Memorial Park

### Saturday, May 19, 2018

11:00-12:00 Registration, Infants, Children, Girls, Boys Civilian & Boys Military

11:00-12:30 Registration, Young Ladies, Adults & Revolving Trophy categories

12:00 Children's Competition \*Young Ladies, Adults, Revolving Trophy categories competition immediately follows children's competition. All costuming events are held in Memorial Park. In case of inclement weather, events will be in lower level of historical center

4:00 p.m.– Robert L. Miller Uniform competition – Memorial Park

## Company Match Events

### Revolver (4 competitors/company)

1. (25 yards) 12 clay pigeons on a backer
2. (25 yards) 6 hanging 6"x6" ceramic tiles
3. (25 yards) 8 hanging clay pigeons
4. (25 yards) 8 hanging 4"x4" ceramic tiles

### Single Shot BLR (4 competitors/company)

1. (50 yards) 16 clay pigeons on backer
2. (50 yards) 8 hanging 4"x4" ceramic tiles
3. (50 yards) 8 hanging clay pot silhouettes
4. (100 yards) 5 hanging 6"x6" ceramic tiles

### Spencer (4 competitors/company)

1. (50 yards) 32 clay pigeons on a backer
2. (50 yards) 16 hanging 4"x4" ceramic tiles
3. (50 yards) 16 hanging clay pot silhouettes
4. (100 yards) 10 hanging 6"x6" ceramic tiles

### Breechloader (4 competitors/company)

1. (50 yards) 32 clay pigeons on a backer
2. (50 yards) 16 hanging 4"x4" ceramic tiles
3. (50 yards) 16 hanging clay pot silhouettes
4. (100 yards) 10 hanging 6"x6" ceramic tiles

### Carbine (8 competitors/company)

1. (50 yards) 32 clay pigeons on a backer
2. (50 yards) 16 hanging 4"x4" ceramic tiles
3. (50 yards) 16 hanging clay pigeons
4. (50 yards) 16 hanging clay pot silhouettes
5. (100 yards) 10 hanging 6"x6" ceramic tiles

### Smoothbore (4 competitors/company)

1. (25 yards) 12 clay pigeons on a backer
2. (25 yards) 8 hanging 4"x4" ceramic tiles
3. (25 yards) 8 hanging clay pot silhouettes
4. (50 yards) 6 hanging 6"x6" ceramic tiles

### Musket (8 competitors/company)

1. (50 yards) 32 clay pigeons on a backer
2. (50 yards) 16 4x4 hanging ceramic tiles
3. (50 yards) 16 hanging clay pigeons
4. (50 yards) 16 hanging clay pot silhouettes
5. (100 yards) 10 hanging 6"x6" ceramic tiles

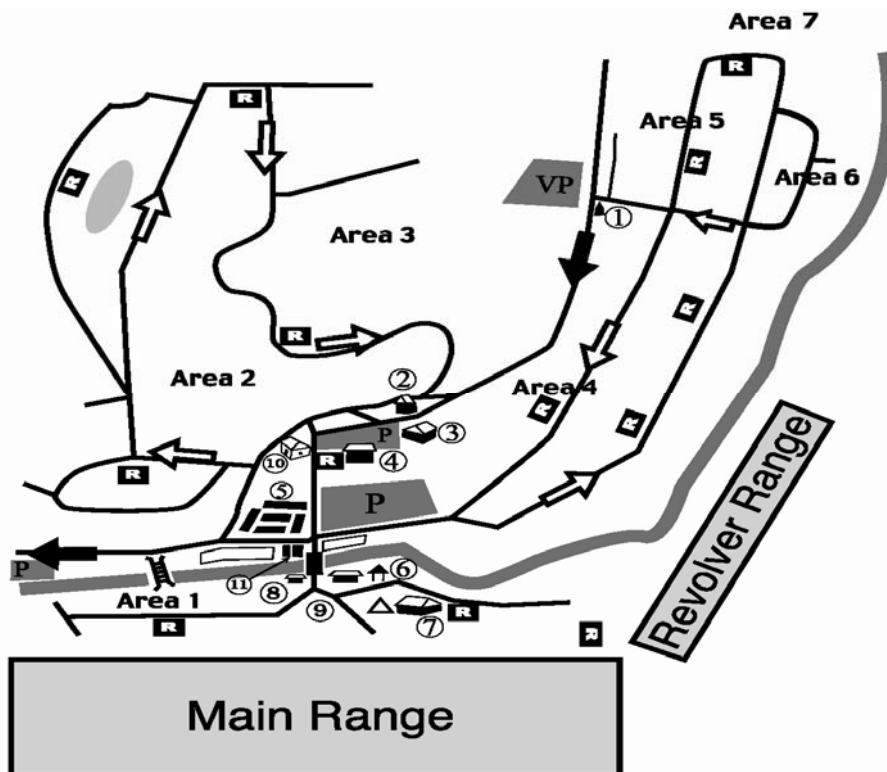
### Demonstration Event – Smoothbore Pistol (3 competitors/company)

1. (12.5 yards) 9 clay Pigeons on a backer
2. (12.5 yards) 6 hanging 6"x6" ceramic tiles
3. (12.5 yards) 6 hanging 4"x4" ceramic tiles

## Fort Shenandoah ♦ Winchester, Virginia

Arrows on the map below indicate one-way traffic on Fort Shenandoah roads. Failure to obey these restrictions will result in a citation and disciplinary action by the N-SSA Board of Directors. If you experience any problems while at Fort Shenandoah, please call 540-888-4334 (only available during national skirmishes). In case of an emergency, dial 911. Emergency evacuation routes are posted on all bulletin boards and available at the Executive Secretary's office.

- P – Parking; VP – Visitor Parking**  
**Solid Arrows – Entrance and Exit Roads**  
**Outline Arrows – One Way Traffic**
- ① – Outer Guardshack
  - ② – Registration
  - ③ – Barn
  - ④ – Historical Center/Veteran's Building
  - ⑤ – Sutler Row
  - ⑥ – Ruritan Snack Shack and Pavilion
  - ⑦ – Stat House
  - ⑧ – Hocker-Hughes Building  
Exec Secretary / SAC Office / IG
  - ⑨ – Memorial Park
  - ⑩ – Property Manager's House
  - ⑪ – NRA
  - △ – AED (Located in Stat Shack)
- R Restrooms**
- △ – AED also located on marked Provost Marshal vehicle



### Musket Company Match Line Positions

Phase 1, Relay 1		Phase 1, Relay 2	
Pos.	Team/Company	Pos.	Team/Company
1	4TH VIRGINIA INFANTRY CO. A	1	4TH VIRGINIA INFANTRY CO. B
2	27TH NORTH CAROLINA TROOP CO. A	2	3RD NO. CAROLINA, LENOIR B CO. A
3	72ND NY VOLUNTEER INFANTRY CO. A	3	67TH NY VOLUNTEER INFANTRY CO. A
4	1ST SC VOLUNTEER INFANTRY CO. A	4	GENL. W.T. SHERMAN'S BODYG CO. A
5	10TH MASS. BATTERY CO. A	5	PALMETTO GUARD CO. I, 2ND CO. A
6	6TH KENTUCKY VOL. INF. CO. A	6	6TH KENTUCKY VOL. INF. CO. B
7	5TH CONN VOLUNTEER INFANTRY CO. A	7	14TH TENNESSEE INFANTRY R CO. A
8	1ST MICH. VOLUNTEER INFANTRY CO. A	8	PALMETTO SHARPSHOOTERS CO. A
9	1ST MARYLAND CAVALRY, CSA CO. A	9	1ST MARYLAND CAVALRY, CSA CO. B
10	2ND VIRGINIA CAVALRY CO. A	10	73RD NY VOLUNTEER INFANTRY CO. A
11	JEFF DAVIS LEGION CO. A	11	1ST MARYLAND CAVALRY, CSA CO. C
12	CO B 1ST PENNSYLVANIA CAV CO. A	12	CO B 1ST PENNSYLVANIA CAV CO. B
13	IREDELL BLUES CO. A	13	IREDELL BLUES CO. B
14	4TH KENTUCKY CAVALRY CO. A	14	11TH INDIANA ZOUAVES CO. A
15	11TH N.J. VOLUNTEER INFANTRY CO. A	15	11TH N.J. VOLUNTEER INFANTRY CO. B
16	TAMMANY REGIMENT CO. A	16	34TH BTTN. VIRGINIA CAVALRY CO. C
17	149TH NY VOLUNTEER INFANTRY CO. A	17	BUNCOMBE RIFLES CO. A
18	34TH BTTN. VIRGINIA CAVALRY CO. A	18	34TH BTTN. VIRGINIA CAVALRY CO. B
19	HARRIS' LIGHT CAVALRY CO. A	19	HARRIS' LIGHT CAVALRY CO. B
20	FIRST ROCKBRIDGE ARTILLERY CO. A	20	66TH NC REGT, CO C. CO. A
21	4TH MICH. VOL. INF. CO. A	21	TERRY'S TEXAS RANGERS CO. A
22	37TH GEORGIA CO. A	22	1ST CONN. VOLUNTEER INFANTRY CO. A
23		23	
24		24	
25	HARLAN'S LIGHT CAVALRY CO. A	25	HARLAN'S LIGHT CAVALRY CO. B
26	UNION GUARDS CO. A	26	UNION GUARDS CO. B
27	DISMAL SWAMP RANGERS CO. A	27	DISMAL SWAMP RANGERS CO. B
28	WASHINGTON BLUE RIFLES CO. A	28	WASHINGTON BLUE RIFLES CO. B
29	149TH PA VOLUNTEER INFANTRY CO. A	29	149TH PA VOLUNTEER INFANTRY CO. B
30	5TH VA. VOL. INF. CO. A	30	5TH VA. VOL. INF. CO. B
31	9TH VIRGINIA CAVALRY, CSA CO. A	31	9TH VIRGINIA CAVALRY, CSA CO. B
32	8TH REGT VIRGINIA VOL. INF. CO. A	32	8TH REGT VIRGINIA VOL. INF. CO. B
33	110TH OHIO VOLUNTEER INFANTRY CO. A	33	110TH OHIO VOLUNTEER INFANTRY CO. B
34	21ST VA INFANTRY, MD GUAR CO. A	34	5TH VA. VOL. INF. CO. C
35	9TH REGIMENT NY CAVALRY CO. A	35	8TH REGT VIRGINIA VOL. INF. CO. C
36	WASHINGTON BLUE RIFLES CO. C	36	44TH NY VOLUNTEER INFANTRY CO. A
37	MOSBY'S RANGERS CO. A	37	MOSBY'S RANGERS CO. B
38	NANSEMOND GUARDS CO. A	38	NANSEMOND GUARDS CO. B
39	MANLY'S BATTERY CO. A	39	1ST REGT. VA. VOLS. CO. A
40	OLD DOMINION DRAGOONS CO. A	40	OLD DOMINION DRAGOONS CO. B
41	2ND MARYLAND ARTILLERY, C CO. A	41	2ND MARYLAND ARTILLERY, C CO. B
42	RICHMOND VOL. MILITIA CO. A	42	14TH VIRGINIA CAVALRY CO. A
43	19TH MICHIGAN INFANTRY CO. A	43	19TH INDIANA INFANTRY CO. A
44	HAMPTON LEGION, CSA CO. A	44	HAMPTON LEGION, CSA CO. B
45	CHARTIERS VALLEY GUARDS CO. A	45	CHARTIERS VALLEY GUARDS CO. B
46	46TH ILLINOIS VOL. INF. R CO. A	46	1ST PA ARTILLERY CO. A
47	MC GREGOR'S 2ND BATTERY CO. A	47	MC GREGOR'S 2ND BATTERY CO. B
48	7TH TENNESSEE INF. REGT., CO. A	48	7TH OHIO VOLUNTEER INFANTRY CO. A
49	UNION VALLEY VOLS. CO. A	49	1ST REGT. ILL. VOL. LT. A CO. A
50	ROWAN ARTILLERY CO. A	50	1ST NJ LIGHT ARTILLERY CO. A
51	FORREST'S ESCORT COMPANY CO. A	51	HAMPTON HORSE ARTILLERY CO. A
52	11TH REGIMENT, PA VOL. INF. CO. A	52	11TH REGIMENT, PA VOL. INF. CO. B
53	17TH VIRGINIA INFANTRY, C CO. A	53	17TH VIRGINIA INFANTRY, C CO. B
54	2ND NJ VOLUNTEERS CO. A	54	FORNEY'S BATTALION, USMC CO. A
55	20TH GEORGIA VOL INF CO. A	55	4TH LOUISIANA INF, DELTA R CO. A
56	29TH WISC VOLUNTEER INFANTRY CO. A	56	29TH WISC VOLUNTEER INFANTRY CO. B
57	ALLEGHENY CITY GUARDS CO. A	57	108TH NY VOLUNTEER INFANTRY CO. A
58	118TH PA VOLUNTEER INFANTRY CO. A	58	13TH NJ VOLUNTEERS CO. A
59	14TH CONN. VOLUNTEER INFANTRY CO. A	59	BATTERY C, 1ST MICH. LT. CO. A
60	13TH REGIMENT NC INFANTRY CO. A	60	3RD REGT. GA. VOL. INF. CO. A
61	3RD MARYLAND ARTILLERY, C CO. A	61	3RD MARYLAND ARTILLERY, C CO. B
62	6TH ALABAMA (RACCOON ROUG CO. A	62	CO G 23RD NC STATE TROOPS CO. A
63	12TH REGIMENT PA RESERVE CO. A	63	6TH PA CAV, RUSH'S LANCER CO. A
64	63RD NEW YORK STATE VOL. CO. A	64	63RD NEW YORK STATE VOL. CO. B
65	WASHINGTON GRAYS CO. A	65	2ND NJ CAVALRY CO. A
66	15TH REGT. NJ VOL. INF. CO. A	66	15TH REGT. NJ VOL. INF. CO. B
67	56TH PA. VOL. INF. CO. A	67	120TH NY VOLUNTEER INFANTRY CO. A

**Musket Company Match Line Positions**

<b>Phase 2, Relay 1</b>		<b>Phase 2, Relay 2</b>	
Pos.	Team/Company	Pos.	Team/Company
1	TUCKERS NAVAL BRIGADE CO. A	1	TUCKERS NAVAL BRIGADE CO. B
2	1ST U.S. ARTILLERY CO. A	2	1ST U.S. ARTILLERY CO. B
3	1ST PA RIFLES (BUCKTAILS) CO. A	3	1ST PA RIFLES (BUCKTAILS) CO. B
4	HARDAWAY'S ALABAMA BTTY CO. A	4	HART'S BATTERY, CSA CO. A
5	CHESAPEAKE ARTILLERY, CSA CO. A	5	COMPANY D, 33RD VIRGINIA CO. A
6	HAZELWOOD VOLUNTEERS CO. A	6	HAZELWOOD VOLUNTEERS CO. B
7	WHEAT'S SPECIAL BTTN,LA T CO. A	7	WHEAT'S SPECIAL BTTN,LA T CO. B
8	11TH VA CAVALRY CO. A	8	11TH VA CAVALRY CO. B
9	1ST TENNESSEE VOL. INF. R CO. A	9	1ST TENNESSEE VOL. INF. R CO. B
10	DULANY TROOP, 6TH VIRGINI CO. A	10	CAPT. SIMMS' BTTN., CSMC CO. A
11	MC NEILL'S RANGERS CO. A	11	17TH PA VOLUNTEER CAVALRY CO. A
12	1ST STUART HORSE ARTY. CO. A	12	1ST STUART HORSE ARTY. CO. B
13	7TH REGT. VIRGINIA VOLUNT CO. A	13	THOMAS LEGION CO. A
14	WHITE'S CO, 35TH VIRGINIA CO. A	14	WHITE'S CO, 35TH VIRGINIA CO. B
15	1ST REGT ENGINEER TROOPS, CO. A	15	LANCASTER FENCIBLES CO. A
16	13TH CONFEDERATE INF. CO. A	16	13TH CONFEDERATE INF. CO. B
17	CO C, 2nd US SHARPSHOOTER CO. A	17	CO C, 2nd US SHARPSHOOTER CO. B
18	7TH WV VOLUNTEER INFANTRY CO. A	18	GRAHAM'S BATTERY CO. A
19	1ST FLORIDA CAVALRY CO. A	19	10TH VIRGINIA VOL. INF. CO. A
20	ST. MARY'S LT. INFANTRY CO. A	20	1ST RICHMOND RIFLES CO. A
21	2ND REGT. PA RES. CORPS CO. A	21	CSS ALABAMA CO. A
22	CHISWELL'S EXILES CO. A	22	R. PRESTON CHEW'S BATTERY CO. A
23		23	
24		24	
25	1ST MARYLAND ARTILLERY, C CO. A	25	1ST MARYLAND ARTILLERY, C CO. B
26	49TH VIRGINIA INFANTRY, C CO. A	26	SOUTHAMPTON GREYS CO. A
27	DELAWARE BLUES CO. A	27	DELAWARE BLUES CO. B
28	KNAP'S BATTERY E, PA LT. CO. A	28	HANOVER GRAYS CO. A
29	COCKADE RIFLES CO. A	29	COCKADE RIFLES CO. B
30	2ND MARYLAND CAVALRY CO. A	30	LAUREL BRIGADE, ANV. CO. A
31	1ST MAINE HEAVY ARTILLERY CO. A	31	PORTSMOUTH LIGHT ARTILLER CO. A
32	1ST MARYLAND INFANTRY, CS CO. A	32	1ST MARYLAND INFANTRY, CS CO. B
33	NORFOLK LIGHT INFANTRY CO. A	33	15TH CONN. VOLUNTEER INFA CO. A
34	12TH REGT. U.S. REGULAR I CO. A	34	DIXIE ARTILLERY CO. A
35	BALTIMORE RIFLES, 1ST MD CO. A	35	DIV. OF MARINES, CSS VIRG CO. A
36	2ND VIRGINIA VOL. INF. CO. A	36	2ND VIRGINIA VOL. INF. CO. B
37		37	
38		38	
39		39	
40		40	
41		41	
42		42	
43		43	
44		44	
45		45	
46		46	
47		47	
48		48	
49		49	
50		50	
51		51	
52		52	
53		53	
54		54	
55		55	
56		56	
57		57	
58		58	
59		59	
60		60	
61		61	
62		62	
63		63	
64		64	
65		65	
66		66	
67		67	

### Carbine Company Match Line Positions

Phase 1, Relay 1		Phase 1, Relay 2	
Pos.	Team/Company	Pos.	Team/Company
1	TUCKERS NAVAL BRIGADE CO. A	1	TUCKERS NAVAL BRIGADE CO. B
2	27TH NORTH CAROLINA TROOP CO. A	2	4TH KENTUCKY CAVALRY CO. A
3	19TH INDIANA INFANTRY CO. A	3	73RD NY VOLUNTEER INFANTR CO. A
4	1ST U.S. ARTILLERY CO. A	4	1ST U.S. ARTILLERY CO. B
5	10TH MASS. BATTERY CO. A	5	6TH KENTUCKY VOL. INF. CO. A
6	HAZELWOOD VOLUNTEERS CO. A	6	CHESAPEAKE ARTILLERY, CSA CO. A
7	JEFF DAVIS LEGION CO. A	7	1ST SC VOLUNTEER INFANTRY CO. A
8	1ST MICH. VOLUNTEER INFAN CO. A	8	14TH TENNESSEE INFANTRY R CO. A
9	1ST MARYLAND CAVALRY, CSA CO. A	9	11TH N.J. VOLUNTEER INFAN CO. A
10	1ST PA RIFLES (BUCKTAILS) CO. A	10	1ST PA RIFLES (BUCKTAILS) CO. B
11	5TH CONN VOLUNTEER INFANT CO. A	11	PALMETTO SHARPSHOOTERS CO. A
12	72ND NY VOLUNTEER INFANTR CO. A	12	4TH VIRGINIA INFANTRY CO. A
13	IREDELL BLUES CO. A	13	IREDELL BLUES CO. B
14	1ST REGT ENGINEER TROOPS, CO. A	14	11TH INDIANA ZOUAVES CO. A
15	CO B 1ST PENNSYLVANIA CAV CO. A	15	TERRY'S TEXAS RANGERS CO. A
16	TAMMANY REGIMENT CO. A	16	ST. MARY'S LT. INFANTRY CO. A
17	12TH REGT. U.S. REGULAR I CO. A	17	BUNCOMBE RIFLES CO. A
18	34TH BTTN. VIRGINIA CAVAL CO. A	18	34TH BTTN. VIRGINIA CAVAL CO. B
19	CO C, 2nd US SHARPSHOOTER CO. A	19	CO C, 2nd US SHARPSHOOTER CO. B
20	HARRIS' LIGHT CAVALRY CO. A	20	HARRIS' LIGHT CAVALRY CO. B
21	11TH VA CAVALRY CO. A	21	11TH VA CAVALRY CO. B
22	1ST STUART HORSE ARTY. CO. A	22	1ST STUART HORSE ARTY. CO. B
23		23	
24		24	
25	HARLAN'S LIGHT CAVALRY CO. A	25	HARLAN'S LIGHT CAVALRY CO. B
26	UNION GUARDS CO. A	26	UNION GUARDS CO. B
27	DISMAL SWAMP RANGERS CO. A	27	DISMAL SWAMP RANGERS CO. B
28	WASHINGTON BLUE RIFLES CO. A	28	WASHINGTON BLUE RIFLES CO. B
29	149TH PA VOLUNTEER INFANT CO. A	29	149TH PA VOLUNTEER INFANT CO. B
30	5TH VA. VOL. INF. CO. A	30	5TH VA. VOL. INF. CO. B
31	9TH VIRGINIA CAVALRY, CSA CO. A	31	COCKADE RIFLES CO. A
32	8TH REGT VIRGINIA VOL. IN CO. A	32	8TH REGT VIRGINIA VOL. IN CO. B
33	110TH OHIO VOLUNTEER INFA CO. A	33	110TH OHIO VOLUNTEER INFA CO. B
34	21ST VA INFANTRY, MD GUAR CO. A	34	13TH CONFEDERATE INF. CO. A
35	2ND MARYLAND ARTILLERY, C CO. A	35	2ND MARYLAND ARTILLERY, C CO. B
36	17TH VIRGINIA INFANTRY, C CO. A	36	14TH VIRGINIA CAVALRY CO. A
37	MOSBY'S RANGERS CO. A	37	HANOVER GRAYS CO. A
38	NANSEMOND GUARDS CO. A	38	NANSEMOND GUARDS CO. B
39	OLD DOMINION DRAGOONS CO. A	39	2ND REGT. PA RES. CORPS CO. A
40	12TH REGIMENT PA RESERVE CO. A	40	12TH REGIMENT PA RESERVE CO. B
41	29TH WISC VOLUNTEER INFAN CO. A	41	29TH WISC VOLUNTEER INFAN CO. B
42	DELAWARE BLUES CO. A	42	DELAWARE BLUES CO. B
43	9TH REGIMENT NY CAVALRY CO. A	43	2ND VIRGINIA VOL. INF. CO. A
44	HAMPTON LEGION, CSA CO. A	44	HAMPTON LEGION, CSA CO. B
45	1ST MAINE HEAVY ARTILLERY CO. A	45	CHARTIERS VALLEY GUARDS CO. A
46	46TH ILLINOIS VOL. INF. R CO. A	46	FORREST'S ESCORT COMPANY CO. A
47	KNAP'S BATTERY E, PA LT. CO. A	47	15TH REGT. NJ VOL. INF. CO. A
48	3RD MARYLAND ARTILLERY, C CO. A	48	1ST REGT. ILL. VOL. LT. A CO. A
49	MC GREGOR'S 2ND BATTERY CO. A	49	MC GREGOR'S 2ND BATTERY CO. B
50	ROWAN ARTILLERY CO. A	50	1ST NJ LIGHT ARTILLERY CO. A
51	6TH ALABAMA (RACCOON ROUG CO. A	51	MC NEILL'S RANGERS CO. A
52	CHISWELL'S EXILES CO. A	52	17TH PA VOLUNTEER CAVALRY CO. A
53	R. PRESTON CHEW'S BATTERY CO. A	53	CSS ALABAMA CO. A

**Carbine Company Match Line Positions**

**Phase 1, Relay 3**

Pos.	Team/Company
1	1ST TENNESSEE VOL. INF. R CO. A
2	6TH PA CAV, RUSH'S LANCER CO. A
3	2ND NJ VOLUNTEERS CO. A
4	GENL. W.T.SHERMAN'S BODYG CO. A
5	6TH KENTUCKY VOL. INF. CO. B
6	PALMETTO GUARD CO. I, 2ND CO. A
7	15TH IND.BTY, OHIO LT ART CO. A
8	149TH NY VOLUNTEER INFANT CO. A
9	11TH N.J. VOLUNTEER INFAN CO. B
10	2ND VIRGINIA CAVALRY CO. A
11	DIV. OF MARINES, CSS VIRG CO. A
12	4TH VIRGINIA INFANTRY CO. B
13	11TH REGIMENT, PA VOL. IN CO. A
14	DULANY TROOP, 6TH VIRGINI CO. A
15	37TH GEORGIA CO. A
16	120TH NY VOLUNTEER INFANT CO. A
17	GRAHAM'S BATTERY CO. A
18	34TH BTTN. VIRGINIA CAVAL CO. C
19	4TH MICH. VOL. INF. CO. A
20	1ST RICHMOND RIFLES CO. A
21	66TH NC REGT, CO C. CO. A
22	14TH CONN. VOLUNTEER INFA CO. A
23	
24	
25	49TH VIRGINIA INFANTRY, C CO. A
26	LAUREL BRIGADE, ANV. CO. A
27	SOUTHAMPTON GREYS CO. A
28	1ST FLORIDA CAVALRY CO. A
29	63RD NEW YORK STATE VOL. CO. A
30	3RD REGT. GA. VOL. INF. CO. A
31	COCKADE RIFLES CO. B
32	7TH REGT. VIRGINIA VOLUNT CO. A
33	13TH REGIMENT NC INFANTRY CO. A
34	13TH CONFEDERATE INF. CO. B
35	10TH VIRGINIA VOL. INF. CO. A
36	BATTERY C, 1ST MICH. LT. CO. A
37	WYTHE RIFLES CO. A
38	NORFOLK LIGHT INFANTRY CO. A
39	1ST MARYLAND ARTILLERY, C CO. A
40	44TH NY VOLUNTEER INFANTR CO. A
41	19TH MICHIGAN INFANTRY CO. A
42	CO G 23RD NC STATE TROOPS CO. A
43	4TH LOUISIANA INF, DELTA R CO. A
44	7TH TENNESSEE INF. REGT., CO. A
45	CHARTIERS VALLEY GUARDS CO. B
46	20TH GEORGIA VOL INF CO. A
47	15TH REGT. NJ VOL. INF. CO. B
48	118TH PA VOLUNTEER INFANT CO. A
49	15TH CONN. VOLUNTEER INFA CO. A
50	13TH NJ VOLUNTEERS CO. A
51	2ND NJ CAVALRY CO. A
52	56TH PA. VOL. INF. CO. A
53	

### Revolver Company Match Line Positions

Phase 1, Relay 1		Phase 2, Relay 1	
Pos.	Team/Company	Pos.	Team/Company
1	HAZELWOOD VOLUNTEERS CO. A	1	
2	CHISWELL'S EXILES CO. A	2	ST. MARY'S LT. INFANTRY CO. A
3	29TH WISC VOLUNTEER INFAN CO. A	3	11TH VA CAVALRY CO. A
4	11TH REGIMENT, PA VOL. IN CO. A	4	14TH CONN. VOLUNTEER INFA CO. A
5	7TH TENNESSEE INF. REGT., CO. A	5	CO G 23RD NC STATE TROOPS CO. A
6	FORREST'S ESCORT COMPANY CO. A	6	10TH MASS. BATTERY CO. A
7	63RD NEW YORK STATE VOL. CO. A	7	WHEAT'S SPECIAL BTTN,LA T CO. B
8	2ND NJ CAVALRY CO. A	8	1ST PA RIFLES (BUCKTAILS) CO. A
9	TUCKERS NAVAL BRIGADE CO. B	9	TUCKERS NAVAL BRIGADE CO. A
10	4TH LOUISIANA INF,DELTA R CO. A	10	1ST MAINE HEAVY ARTILLERY CO. A
11	HAMPTON LEGION, CSA CO. A	11	WHEAT'S SPECIAL BTTN,LA T CO. A
12	HARRIS' LIGHT CAVALRY CO. D	12	HARRIS' LIGHT CAVALRY CO. B
13	BATTERY C, 1ST MICH. LT. CO. A	13	9TH REGIMENT NY CAVALRY CO. A
14	JEFF DAVIS LEGION CO. A	14	12TH REGIMENT PA RESERVE CO. A
15	12TH REGT. U.S. REGULAR I CO. A	15	56TH PA. VOL. INF. CO. A
16	27TH NORTH CAROLINA TROOP CO. A	16	1ST FLORIDA CAVALRY CO. A
17	HARRIS' LIGHT CAVALRY CO. C	17	HARRIS' LIGHT CAVALRY CO. A
18	DELAWARE BLUES CO. A	18	49TH VIRGINIA INFANTRY, C CO. A
19	ALLEGHENY CITY GUARDS CO. A	19	BUNCOMBE RIFLES CO. A
20	19TH MICHIGAN INFANTRY CO. A	20	2ND NJ VOLUNTEERS CO. A
21	DISMAL SWAMP RANGERS CO. A	21	19TH INDIANA INFANTRY CO. A
22	4TH KENTUCKY CAVALRY CO. A	22	CHESAPEAKE ARTILLERY, CSA CO. A
23	COCKADE RIFLES CO. B	23	COCKADE RIFLES CO. A
24	6TH PA CAV, RUSH'S LANCER CO. A	24	8TH REGT VIRGINIA VOL. IN CO. A
25	15TH CONN. VOLUNTEER INFA CO. A	25	GENL. W.T.SHERMAN'S BODYG CO. A
26	72ND NY VOLUNTEER INFANTR CO. A	26	14TH VIRGINIA CAVALRY CO. A
27	2ND VIRGINIA CAVALRY CO. A	27	CHESAPEAKE ARTILLERY, CSA CO. B
28	OLD DOMINION DRAGOONS CO. A	28	9TH VIRGINIA CAVALRY, CSA CO. C
29	5TH CONN VOLUNTEER INFANT CO. A	29	17TH VIRGINIA INFANTRY, C CO. A
30	9TH VIRGINIA CAVALRY, CSA CO. B	30	9TH VIRGINIA CAVALRY, CSA CO. A
31	KNAP'S BATTERY E, PA LT. CO. A	31	110TH OHIO VOLUNTEER INFA CO. A
32	1ST REGT. ILL. VOL. LT. A CO. A	32	5TH VA. VOL. INF. CO. A
33	1ST STUART HORSE ARTY. CO. B	33	1ST STUART HORSE ARTY. CO. A
34	20TH GEORGIA VOL INF CO. A	34	WASHINGTON BLUE RIFLES CO. A
35	2ND MARYLAND ARTILLERY, C CO. B	35	2ND MARYLAND ARTILLERY, C CO. A
36	IREDELL BLUES CO. B	36	IREDELL BLUES CO. A
37	44TH NY VOLUNTEER INFANTR CO. A	37	NANSEMOND GUARDS CO. B
38	MC GREGOR'S 2ND BATTERY CO. B	38	MC GREGOR'S 2ND BATTERY CO. A
39	IREDELL BLUES CO. C	39	1ST MICH. VOLUNTEER INFAN CO. A
40	149TH PA VOLUNTEER INFANT CO. B	40	149TH PA VOLUNTEER INFANT CO. A
41	21ST VA INFANTRY, MD GUAR CO. B	41	21ST VA INFANTRY, MD GUAR CO. A
42	NANSEMOND GUARDS CO. C	42	NANSEMOND GUARDS CO. A
43	1ST MARYLAND CAVALRY, CSA CO. A	43	CO C, 2nd US SHARPSHOOTER CO. A

**Breech-Loader SS Company Match Line Positions**

**Frame 'A'**

Pos.	Team/Company
1A	1ST PA RIFLES (BUCKTAILS) CO. A
2A	10TH MASS. BATTERY CO. A
3A	149TH PA VOLUNTEER INFANT CO. A
4A	8TH REGT VIRGINIA VOL. IN CO. A
5A	WASHINGTON BLUE RIFLES CO. A
6A	29TH WISC VOLUNTEER INFAN CO. A
7A	110TH OHIO VOLUNTEER INFA CO. A
8A	6TH KENTUCKY VOL. INF. CO. A
9A	DELAWARE BLUES CO. A

**Frame 'B'**

Pos.	Team/Company
1B	CO C, 2nd US SHARPSHOOTER CO. A
2B	1ST FLORIDA CAVALRY CO. A
3B	WASHINGTON BLUE RIFLES CO. B
4B	DELAWARE BLUES CO. B
5B	149TH PA VOLUNTEER INFANT CO. B
6B	8TH REGT VIRGINIA VOL. IN CO. B
7B	34TH BTTN. VIRGINIA CAVAL CO. A
8B	UNION GUARDS CO. A
9B	



**Breech-Loader Company Match Line Positions**

Pos.	Frame 'A' Team/Company	Pos.	Frame 'B' Team/Company
1A		1B	
2A		2B	
3A		3B	
4A		4B	
5A		5B	
6A		6B	
7A		7B	
8A		8B	
9A		9B	
10A		10B	
11A	6TH KENTUCKY VOL. INF. CO. A	11B	1ST U.S. ARTILLERY CO. A
12A	TUCKERS NAVAL BRIGADE CO. A	12B	CHISWELL'S EXILES CO. A
13A	IREDELL BLUES CO. A	13B	4TH VIRGINIA INFANTRY CO. A
14A	149TH NY VOLUNTEER INFANT CO. A	14B	TUCKERS NAVAL BRIGADE CO. B
15A	HARLAN'S LIGHT CAVALRY CO. A	15B	11TH N.J. VOLUNTEER INFAN CO. A
16A	TAMMANY REGIMENT CO. A	16B	9TH REGIMENT NY CAVALRY CO. A
17A	11TH VA CAVALRY CO. A	17B	LANCASTER FENCIBLES CO. A
18A	3RD REGT. GA. VOL. INF. CO. A	18B	10TH VIRGINIA VOL. INF. CO. A
19A	14TH CONN. VOLUNTEER INFA CO. A	19B	66TH NC REGT, CO C. CO. A
20A	HARRIS' LIGHT CAVALRY CO. A	20B	HAMPTON HORSE ARTILLERY CO. A
21A	49TH VIRGINIA INFANTRY, C CO. A	21B	13TH REGIMENT NC INFANTRY CO. A
22A	29TH WISC VOLUNTEER INFAN CO. A	22B	1ST PA ARTILLERY CO. A
23A		23B	
24A		24B	
25A	1ST RICHMOND RIFLES CO. A	25B	15TH REGT. NJ VOL. INF. CO. A
26A	2ND NJ CAVALRY CO. A	26B	HAMPTON LEGION, CSA CO. A
27A	17TH VIRGINIA INFANTRY, C CO. A	27B	DISMAL SWAMP RANGERS CO. A
28A	1ST STUART HORSE ARTY. CO. A	28B	15TH CONN. VOLUNTEER INFA CO. A
29A	KNAP'S BATTERY E, PA LT. CO. A	29B	9TH VIRGINIA CAVALRY, CSA CO. B
30A	COCKADE RIFLES CO. A	30B	7TH TENNESSEE INF. REGT., CO. A
31A	9TH VIRGINIA CAVALRY, CSA CO. A	31B	1ST NJ LIGHT ARTILLERY CO. A
32A	8TH REGT VIRGINIA VOL. IN CO. A	32B	12TH REGIMENT PA RESERVE CO. A
33A	110TH OHIO VOLUNTEER INFA CO. A	33B	2ND MARYLAND ARTILLERY, C CO. B
34A	21ST VA INFANTRY, MD GUAR CO. A	34B	14TH VIRGINIA CAVALRY CO. A
35A	2ND MARYLAND ARTILLERY, C CO. A	35B	NORFOLK LIGHT INFANTRY CO. A
36A	NANSEMOND GUARDS CO. A	36B	SOUTHAMPTON GREYS CO. A
37A	CHARTIERS VALLEY GUARDS CO. A	37B	

**Spencer Company Match Line Positions**

Pos.	Frame 'A' Team/Company	Pos.	Frame 'B' Team/Company
1		1B	
2		2B	
3		3B	
4		4B	
5		5B	
6		6B	
7		7B	
8		8B	
9		9B	
10		10B	
11		11B	
12		12B	
13		13B	
14		14B	
15		15B	
16		16B	
17		17B	
18		18B	
19		19B	
20		20B	
21		21B	
22		22B	
23		23B	
24		24B	
25		25B	
26		26B	
27		27B	
28		28B	
29		29B	
30		30B	
31		31B	
32		32B	
33		33B	
34		34B	
35		35B	
36		36B	
37		37B	
38		38B	
39		39B	
40	110TH OHIO VOLUNTEER INFA CO. A	40B	12TH REGT. U.S. REGULAR I CO. A
41	11TH REGIMENT, PA VOL. IN CO. A	41B	1ST MARYLAND CAVALRY, CSA CO. A
42	46TH ILLINOIS VOL. INF. R CO. A	42B	1ST REGT. ILL. VOL. LT. A CO. A

### Smoothbore Company Match Line Positions

#### Frame 'A', - Relay 1

Pos.	Team/Company
1A	TUCKERS NAVAL BRIGADE CO. A
2A	27TH NORTH CAROLINA TROOP CO. A
3A	4TH KENTUCKY CAVALRY CO. A
4A	6TH KENTUCKY VOL. INF. CO. A
5A	4TH VIRGINIA INFANTRY CO. A
6A	HAZELWOOD VOLUNTEERS CO. A
7A	14TH TENNESSEE INFANTRY R CO. A
8A	1ST MICH. VOLUNTEER INFAN CO. A
9A	1ST MARYLAND CAVALRY, CSA CO. A
10A	TERRY'S TEXAS RANGERS CO. A
11A	1ST SC VOLUNTEER INFANTRY CO. A
12A	PALMETTO SHARPSHOOTERS CO. A
13A	IREDELL BLUES CO. A
14A	5TH CONN VOLUNTEER INFANT CO. A
15A	HARLAN'S LIGHT CAVALRY CO. A
16A	1ST FLORIDA CAVALRY CO. A
17A	5TH VA. VOL. INF. CO. A
18A	11TH REGIMENT, PA VOL. IN CO. A
19A	13TH CONFEDERATE INF. CO. A
20A	29TH WISC VOLUNTEER INFAN CO. A
21A	BATTERY C, 1ST MICH. LT. CO. A
22A	14TH CONN. VOLUNTEER INFA CO. A
23A	
24A	
25A	34TH BTTN. VIRGINIA CAVAL CO. A
26A	UNION GUARDS CO. A
27A	DISMAL SWAMP RANGERS CO. A
28A	WASHINGTON BLUE RIFLES CO. A
29A	R. PRESTON CHEW'S BATTERY CO. A
30A	9TH VIRGINIA CAVALRY, CSA CO. A
31A	COCKADE RIFLES CO. A
32A	8TH REGT VIRGINIA VOL. IN CO. A
33A	110TH OHIO VOLUNTEER INFA CO. A
34A	21ST VA INFANTRY, MD GUAR CO. A
35A	1ST REGT. ILL. VOL. LT. A CO. A
36A	1ST MARYLAND INFANTRY, CS CO. A
37A	MOSBY'S RANGERS CO. A
38A	NANSEMOND GUARDS CO. A
39A	ROWAN ARTILLERY CO. A

#### Frame 'B', - Relay 1

Pos.	Team/Company
1B	1ST PA RIFLES (BUCKTAILS) CO. A
2B	1ST U.S. ARTILLERY CO. A
3B	HARDAWAY'S ALABAMA BTTY CO. A
4B	120TH NY VOLUNTEER INFANT CO. A
5B	11TH N.J. VOLUNTEER INFAN CO. A
6B	10TH MASS. BATTERY CO. A
7B	GENL. W.T.SHERMAN'S BODYG CO. A
8B	37TH GEORGIA CO. A
9B	PALMETTO GUARD CO. I, 2ND CO. A
10B	19TH INDIANA INFANTRY CO. A
11B	CO G 23RD NC STATE TROOPS CO. A
12B	1ST REGT ENGINEER TROOPS, CO. A
13B	9TH REGIMENT NY CAVALRY CO. A
14B	11TH INDIANA ZOUAVES CO. A
15B	WHITE'S CO, 35TH VIRGINIA CO. A
16B	TAMMANY REGIMENT CO. A
17B	7TH TENNESSEE INF. REGT., CO. A
18B	3RD REGT. GA. VOL. INF. CO. A
19B	12TH REGT. U.S. REGULAR I CO. A
20B	HARRIS' LIGHT CAVALRY CO. A
21B	DIV. OF MARINES, CSS VIRG CO. A
22B	63RD NEW YORK STATE VOL. CO. A
23B	
24B	
25B	1ST STUART HORSE ARTY. CO. A
26B	149TH PA VOLUNTEER INFANT CO. A
27B	46TH ILLINOIS VOL. INF. R CO. A
28B	110TH OHIO VOLUNTEER INFA CO. C
29B	14TH MISS. INFANTRY REGIM CO. A
30B	49TH VIRGINIA INFANTRY, C CO. A
31B	FORREST'S ESCORT COMPANY CO. A
32B	1ST MARYLAND INFANTRY, CS CO. C
33B	2ND VIRGINIA VOL. INF. CO. A
34B	CHARTIERS VALLEY GUARDS CO. A
35B	15TH CONN. VOLUNTEER INFA CO. A
36B	NANSEMOND GUARDS CO. C
37B	OLD DOMINION DRAGOONS CO. A
38B	2ND MARYLAND ARTILLERY, C CO. A
39B	KNAP'S BATTERY E, PA LT. CO. A

**Smoothbore Company Match Line Positions**

**Frame 'A', - Relay 2**

Pos.	Team/Company
1A	TUCKERS NAVAL BRIGADE CO. B
2A	27TH NORTH CAROLINA TROOP CO. B
3A	4TH KENTUCKY CAVALRY CO. B
4A	6TH KENTUCKY VOL. INF. CO. B
5A	4TH VIRGINIA INFANTRY CO. B
6A	HAZELWOOD VOLUNTEERS CO. B
7A	14TH TENNESSEE INFANTRY R CO. B
8A	11TH VA CAVALRY CO. A
9A	1ST MARYLAND CAVALRY, CSA CO. B
10A	TERRY'S TEXAS RANGERS CO. B
11A	4TH LOUISIANA INF, DELTA R CO. A
12A	PALMETTO SHARPSHOOTERS CO. B
13A	IREDELL BLUES CO. B
14A	DULANY TROOP, 6TH VIRGINI CO. A
15A	HARLAN'S LIGHT CAVALRY CO. B
16A	1ST FLORIDA CAVALRY CO. B
17A	5TH VA. VOL. INF. CO. B
18A	11TH REGIMENT, PA VOL. IN CO. B
19A	13TH CONFEDERATE INF. CO. B
20A	29TH WISC VOLUNTEER INFAN CO. B
21A	BATTERY C, 1ST MICH. LT. CO. B
22A	7TH REGT. VIRGINIA VOLUNT CO. A
23A	
24A	
25A	34TH BTTN. VIRGINIA CAVAL CO. B
26A	UNION GUARDS CO. B
27A	DISMAL SWAMP RANGERS CO. B
28A	WASHINGTON BLUE RIFLES CO. B
29A	8TH REGT VIRGINIA VOL. IN CO. C
30A	9TH VIRGINIA CAVALRY, CSA CO. B
31A	COCKADE RIFLES CO. B
32A	8TH REGT VIRGINIA VOL. IN CO. B
33A	110TH OHIO VOLUNTEER INFA CO. B
34A	21ST VA INFANTRY, MD GUAR CO. B
35A	3RD MARYLAND ARTILLERY, C CO. A
36A	1ST MARYLAND INFANTRY, CS CO. B
37A	14TH VIRGINIA CAVALRY CO. A
38A	NANSEMOND GUARDS CO. B
39A	

**Frame 'B', - Relay 2**

Pos.	Team/Company
1B	CO C, 2nd US SHARPSHOOTER CO. A
2B	1ST U.S. ARTILLERY CO. B
3B	149TH NY VOLUNTEER INFANT CO. A
4B	19TH MICHIGAN INFANTRY CO. A
5B	11TH N.J. VOLUNTEER INFAN CO. B
6B	6TH KENTUCKY VOL. INF. CO. C
7B	GENL. W.T.SHERMAN'S BODYG CO. B
8B	MC GREGOR'S 2ND BATTERY CO. A
9B	6TH PA CAV, RUSH'S LANCER CO. A
10B	19TH INDIANA INFANTRY CO. B
11B	CO G 23RD NC STATE TROOPS CO. B
12B	10TH VIRGINIA VOL. INF. CO. A
13B	5TH VA. VOL. INF. CO. C
14B	11TH INDIANA ZOUAVES CO. B
15B	WHITE'S CO, 35TH VIRGINIA CO. B
16B	IREDELL BLUES CO. C
17B	29TH WISC VOLUNTEER INFAN CO. C
18B	HARLAN'S LIGHT CAVALRY CO. C
19B	12TH REGT. U.S. REGULAR I CO. B
20B	HARRIS' LIGHT CAVALRY CO. B
21B	DIV. OF MARINES, CSS VIRG CO. B
22B	13TH CONFEDERATE INF. CO. C
23B	
24B	
25B	1ST STUART HORSE ARTY. CO. B
26B	149TH PA VOLUNTEER INFANT CO. B
27B	34TH BTTN. VIRGINIA CAVAL CO. C
28B	UNION GUARDS CO. C
29B	COCKADE RIFLES CO. C
30B	49TH VIRGINIA INFANTRY, C CO. B
31B	FORREST'S ESCORT COMPANY CO. B
32B	21ST VA INFANTRY, MD GUAR CO. C
33B	2ND VIRGINIA VOL. INF. CO. B
34B	CHARTIERS VALLEY GUARDS CO. B
35B	15TH CONN. VOLUNTEER INFA CO. B
36B	NANSEMOND GUARDS CO. D
37B	
38B	2ND MARYLAND ARTILLERY, C CO. B
39B	

### Mortar Match Firing Positions

Position	Team/Mortar #		
3A	DISMAL SWAMP RANGERS 1	3B	4TH VIRGINIA INFANTRY 1
4	ROWAN ARTILLERY 1	5A	10TH MASSACHUSETTS BTTY 1
5B	DULANY TROOP, 6TH VA CAVALRY 1	6	HAZELWOOD'S VOLS 1
7A	5TH VIRGINIA VOL INFANTRY 1	7B	5TH VIRGINIA VOL INFANTRY 2
8	HOWITZER SETUP AREA 1	9A	1ST MARYLAND CAVALRY (8 INCH)
9B	1ST MARYLAND CAVALRY 2	10	37TH GEORGIA INF 1
11A	MANLY'S BATTERY 1	11B	MANLY'S BATTERY 2
12	HARDAWAY'S ALA BTTY 1	13A	HARDAWAY'S ALA BTTY 2
13B	HARDAWAY'S ALA BTTY 3	14	FORREST ESCORT COMPANY 1
15A	1ST VIRGINIA VOLS (DES) 1	15B	1ST VIRGINIA VOLS (LARS) 1
16	HARRIS LIGHT CAVALRY 1	17A	3RD MARYLAND ARTY 1
17B	3RD MARYLAND ARTY 2	18	BUNCOMBE RIFLES 1
19A	TUCKER NAVAL BRIGADE 1	19B	TUCKERS NAVAL BRIGADE 2
20	15TH IND BTTY OHIO LT ARTY 1	21A	ALLEGHENY CITY GUARDS 1
21B	GRAHAM'S BATTERY 1	22	PALMETTO GUARDS, CO. I, 2ND SC
23A	ARTILLERY STAFF USE 1	23B	ARTILLERY STAFF USE 2
24	ARTILLERY STAFF USE 3	25A	11TH NJ VOLUNTEER INF 1
25B	11TH NJ VOLUNTEER INF 2	26	MOSBY'S RANGERS 1
27A	7TH REGT VIRGINIA VOLS 1	27B	7TH REGT VIRGINIA VOLS 2
28	8TH REGT VA VOLS 1	29A	56TH PENN VOL INF 1
29B	56TH PENN VOL INF 2	30	12 REGT U.S. REGULAR INF 1
31A	WHEAT'S SPEC BTTY LA TIGERS 1	31B	HOSPITAL 1
32	HOSPITAL 2	33A	WHITE'S CO 35TH VA CAV 1
33B	14TH VIRGINIA CAV 1	34	NORFOLK LIGHT INF 1
35A	15TH REGT NJ VOL INF 1	35B	15TH REGT NJ VOL INF 2
36	R. PRESTON CHEW'S BTTY 1	37A	1ST PENN RIFLES (BUCKTAILS) 1
37B	1ST PENN RIFLES (BUCKTAILS) 2	38	7TH TENN INF REGT CSA 1
39A	SOUTHAMPTON GREYS 1	39B	SOUTHAMPTON GREYS 2
40	MCNEILL'S RANGERS 1	41A	OLD DOMINION DRAGOONS 1
41B	9TH REGT NY CAVALRY 1	42	149TH NEW YORK VOLS 1
43A	27TH NORTH CAROLINA TRPS 1	43B	4TH KENTUCKY CAVALRY 1
44	12TH REGT PA RES VOLS 1	46	12TH REGT PA RES VOLS 2
48	2ND MARYLAND ARTY CSA 1	49A	1ST REGT ILL VOL LT ARTY 1
49B	DELAWARE BLUES 1	50	PORTSMOUTH LT ARTY 1
51A	1ST NEW JERSEY LIGHT ARTY 1	51B	1ST NEW JERSEY LIGHT ARTY 2

North-South Skirmish Association, Inc.  
137th National Skirmish, May 16 - 20, 2018  
**Artillery Match Firing Positions**

Relay: 1

<b>Position</b>	<b>Gun/Crew</b>
-1	BUNCOMBE RIFLES (Artillery, Rifled)
0	MANLY'S BTTY NO. 1 (Artillery, Rifled)
1	SOUTHAMPTON GREYS NO. 1 (Artillery, Rifled)
2	1ST VIRGINIA VOLS (JAMIE) (Artillery, Rifled)
3	1ST VIRGINIA VOLS (ROB) (Artillery, Rifled)
4	1ST VIRGINIA VOLS (SCOTT) (Artillery, Rifled)
5	1ST MARYLAND CAV (TIM) (Artillery, Rifled)
6	5TH VA VOL INF NO. 1 (Artillery, Rifled)
7	10TH MASS BTTY (Artillery, Rifled)
8	1ST TENNESSEE VOL INF (Artillery, Rifled)
9	1ST PA ARTILLERY (Artillery, Rifled)
10	2ND VIRGINIA CAV (Artillery, Rifled)
11	8TH REGT VA VOL INF (Artillery, Rifled)
12	2ND MARYLAND ARTY (Artillery, Rifled)
13	DULANY TRP 6TH VA CAV (Artillery, Rifled)
14	3RD MARYLAND ARTY NO.1 (Artillery, Smoothbore)
15	PORTSMOUTH LIGHT ARTY (Artillery, Smoothbore)

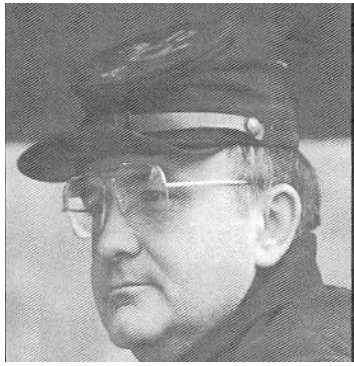
Relay: 2

<b>Position</b>	<b>Gun/Crew</b>
0	MANLY'S BTTY NO. 2 (Artillery, Smoothbore)
1	SOUTHAMPTON GREYS NO. 2 (Artillery, Rifled)
2	7TH REGT VA VOL INF (Artillery, Rifled)
3	1ST VIRGINIA VOLS (DES) (Artillery, Rifled)
4	12TH REGT U.S. REGULAR INF (Artillery, Rifled)
5	1ST MARYLAND CAV (KATIE) (Rifled Howitzer)
6	1ST MAINE HVY ARTY (Artillery, Rifled)
7	15TH IND BTTY OHIO LT ARTY NO. 1 (Rifled Howitzer)
8	HARDAWAY'S ALA BTTY NO. 1 (Artillery, Smoothbore)
9	HARDAWAY'S ALA BTTY NO. 2 (Artillery, Smoothbore)
10	DIXIE ARTILLERY (Artillery, Smoothbore)
11	CO G 23RD N.C. ST TRP (Artillery, Rifled)
12	PALMETTO SHARPSHOOTERS (Rifled Howitzer)
13	ROWAN ARTY (Rifled Howitzer)
14	3RD MARYLAND ARTY NO. 2 (Artillery, Smoothbore)
15	1ST MARYLAND ARTY (Artillery, Smoothbore)

North-South Skirmish Association, Inc.  
137th National Skirmish, May 16 - 20, 2018  
**Artillery Match Firing Positions**

## **Howitzer (Shoots on Friday May 18<sup>th</sup>)**

<b>Position</b>	<b>Gun/Crew</b>
<b>5</b>	ROWAN ARTY (Howitzer)
<b>6</b>	1ST FLORIDA CAV (Howitzer)
<b>7</b>	3RD MARYLAND ARTY (Howitzer)
<b>8</b>	1ST MARYLAND CAV (Howitzer)
<b>9</b>	DIXIE ARTILLERY (Howitzer)



**ATTENTION N-SSA GOLFERS  
THE “DOC” CHAMBERS MEMORIAL  
GOLF OUTING**

**HELP KEEP DOC’S DREAM ALIVE!**

**Thursday, May 17, 2018, 1:00 PM, SHOTGUN START  
Bowling Green Country Club, NORTH Course**

**Take I-81 South to Stephens City Exit.  
Turn left off exit and follow to US 522  
Turn right onto US 522 (At dinosaur)  
Turn left onto Fairground Road, 3 miles  
Take 1st Left after the Stop Intersection for the NORTH Course.**

**\$35 per Person Includes Greens Fees, Cart, Awards  
COLLARED SHIRT, SHORTS OR SLACKS!  
NO CUT OFFS!!! JEANS PERMITTED.**

**Shoot all day Wednesday AND Thursday Morning  
Relax and unwind Thursday afternoon!**

**Open to N-SSA Members, Their Immediate Families and/or Significant Others  
Form Teams or Come as an Individual Player.  
Men! Women! Young golfers! Come Join Us!  
Scramble format. Two flights.**

**Pre-Registration Required!**

You **MUST** contact  
Bob Klutas at 717-921-8660 or cell 717-514-8325  
Or text my cell phone.

Send e-mail to [stonycrick61@gmail.com](mailto:stonycrick61@gmail.com) by  
**May 14, 2018**

**(I leave for the Fort on 5/12)**

**Give me a call or see me at camp,  
1st Pa. Rifles Bucktails**